

ALTO SAX 1

The Twist

UNISON PATTERNS

Words and Music by HANK BALLARD
Arranged by MICHAEL SWEENEY

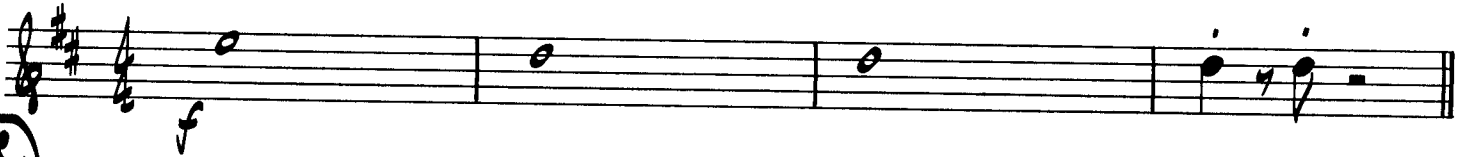
(A)



(B)



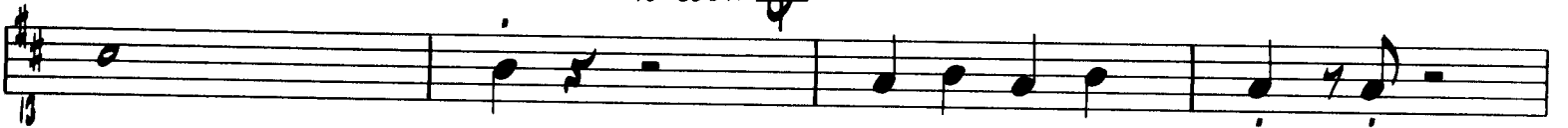
FAST ROCK



(5) (8)



TO CODA C



(7)



Copyright © 1959 by Fort Knox Music Inc. and Trio Music Company, Inc.
Copyright Renewed

This arrangement Copyright © 1989 by Fort Knox Music Inc. and Trio Music Company, Inc.
All rights administered by Hudson Bay Music, Inc.

Alto Sax 1

21

25

29

33

37

SOLO FOR ANY SAX

41

1ST TIME ONLY

45

G D

49

A G D (1.) (2.) D.S. AL CODA

⊕ CODA

54

59

ALTO SAX 2

The Twist

UNISON PATTERNS

Words and Music by HANK BALLARD
Arranged by MICHAEL SWEENEY

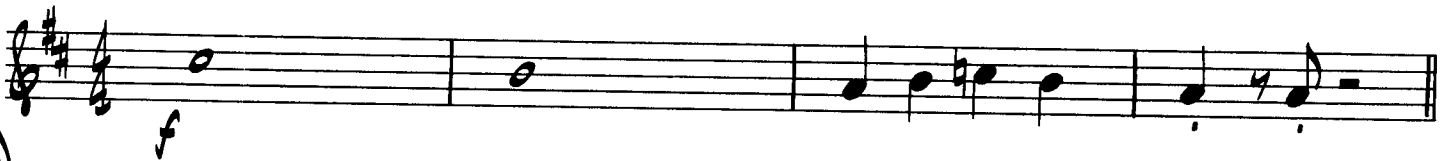
(A)



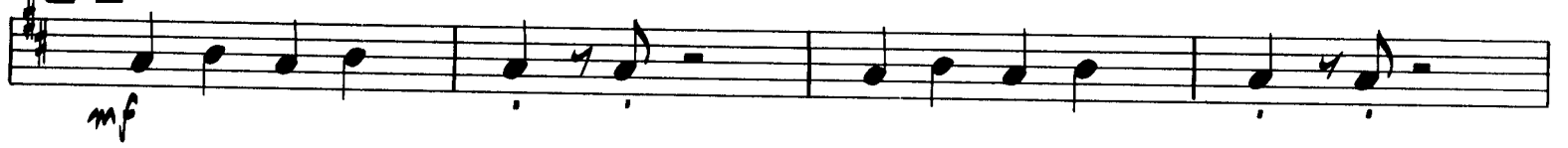
(B)



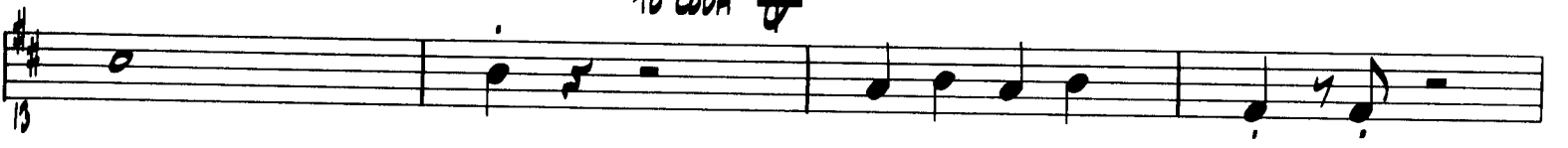
FAST ROLL



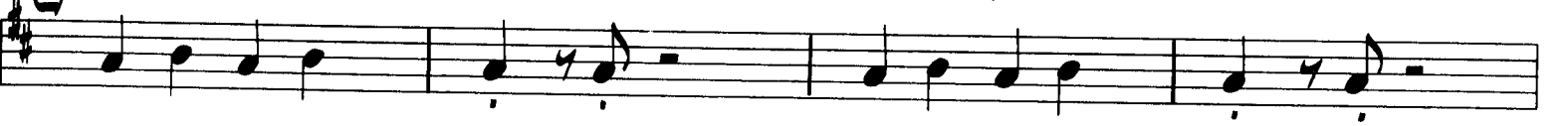
(5) (8)



TO CODA



(7)



Copyright © 1959 by Fort Knox Music Inc. and Trio Music Company, Inc.
Copyright Renewed
This arrangement Copyright © 1989 by Fort Knox Music Inc. and Trio Music Company, Inc.
All rights administered by Hudson Bay Music, Inc.
International Copyright Secured All Rights Reserved
Used by Permission

21

25

29

33

37

SOLO FOR ANY SAX

41

1ST TIME ONLY

D

45

G

D

49

A

G

D

1.

2.

D.S. AL CODA

54

CODA

59

TENOR SAX 1

The Twist

UNISON PATTERNS

Words and Music by HANK BALLARD
Arranged by MICHAEL SWEENEY

A

B

FAST ROLL

5 8

TO CODA ⊛

SOLI

17

Copyright © 1959 by Fort Knox Music Inc. and Trio Music Company, Inc.
Copyright Renewed
This arrangement Copyright © 1989 by Fort Knox Music Inc. and Trio Music Company, Inc.
All rights administered by Hudson Bay Music, Inc.
International Copyright Secured All Rights Reserved
Used by Permission

Tenor Sax 1

21

25

29

33

37

SOLO FOR ANY SAX

41

1ST TIME ONLY

45

49

54

CODA

59

TENOR SAX 2

The Twist

Words and Music by HANK BALLARD
Arranged by MICHAEL SWEENEY

UNISON PATTERNS

(A)

Musical staff for unison pattern A, starting with a treble clef and a key signature of one sharp (F#). The melody consists of eighth notes: F#4, G4, A4, B4, C5, B4, A4, G4, F#4, E4, D4, C4. Dynamics include *mf*.

(B)

Musical staff for unison pattern B, starting with a treble clef and a key signature of one sharp (F#). The melody consists of eighth notes: F#4, G4, A4, B4, C5, B4, A4, G4, F#4, E4, D4, C4.

FAST ROCK

Musical staff for the fast rock section, starting with a treble clef and a key signature of one sharp (F#). The melody consists of quarter notes: F#4, G4, A4, B4, C5, B4, A4, G4, F#4, E4, D4, C4. Dynamics include *f*.

(S) (S)

Musical staff for the fast rock section, starting with a treble clef and a key signature of one sharp (F#). The melody consists of quarter notes: F#4, G4, A4, B4, C5, B4, A4, G4, F#4, E4, D4, C4. Dynamics include *mf*.

Musical staff for the fast rock section, starting with a treble clef and a key signature of one sharp (F#). The melody consists of quarter notes: F#4, G4, A4, B4, C5, B4, A4, G4, F#4, E4, D4, C4.

TO CODA 

Musical staff for the fast rock section, starting with a treble clef and a key signature of one sharp (F#). The melody consists of quarter notes: F#4, G4, A4, B4, C5, B4, A4, G4, F#4, E4, D4, C4. Dynamics include *f*. A *SOLI* marking is present above the staff.

(17)

Musical staff for the fast rock section, starting with a treble clef and a key signature of one sharp (F#). The melody consists of quarter notes: F#4, G4, A4, B4, C5, B4, A4, G4, F#4, E4, D4, C4.

Copyright © 1959 by Fort Knox Music Inc. and Trio Music Company, Inc.
 Copyright Renewed
 This arrangement Copyright © 1989 by Fort Knox Music Inc. and Trio Music Company, Inc.
 All rights administered by Hudson Bay Music, Inc.
 International Copyright Secured All Rights Reserved
 Used by Permission

21

25

29

33

37

1ST TIME ONLY

G

41

45

C

G

49

D

C

G

1.

2. D.S. AL CODA

54

CODA

59

f

BARITONE SAX

The Twist

Words and Music by HANK BALLARE
Arranged by MICHAEL SWEENEY

UNISON PATTERNS

Handwritten circled letter **A** above the first staff.

mf

FAST ROCK

Handwritten circled letters **5** and **8** above the first staff.

f

mf

TO CODA ~~♩~~

Handwritten circled letter **17** above the first staff.

SOLI

f

Copyright © 1959 by Fort Knox Music Inc. and Trio Music Company, Inc.
Copyright Renewed
This arrangement Copyright © 1989 by Fort Knox Music Inc. and Trio Music Company, Inc.
All rights administered by Hudson Bay Music, Inc.
International Copyright Secured All Rights Reserved
Used by Permission

21

25

29

33

37

SOLO FOR ANY SAX

41

1ST TIME ONLY

D

45

G

D

49

A

G

D

1. 2. D.S. AL CODA

54

CODA

59

TROMBONE 1

The Twist

UNISON PATTERNS

Words and Music by HANK BALLARD
Arranged by MICHAEL SWEENEY

A

FAST ROCK

Copyright © 1959 by Fort Knox Music Inc. and Trio Music Company, Inc.

Copyright Renewed

This arrangement Copyright © 1989 by Fort Knox Music Inc. and Trio Music Company, Inc.

All rights administered by Hudson Bay Music, Inc.

International Copyright Secured All Rights Reserved

Used by Permission

17

21

29

33

37

41

SOLO FOR ANY TBN. -
F 2ND TIME ONLY

45

Bb F

49

C Bb F

1. PLAY-SOLO PICK-UPS 2. (D.S. AL CODA)

54

CODA

59

f

The Twist

TROMBONE 2

UNISON PATTERNS

Words and Music by HANK BALLARD
Arranged by MICHAEL SWEENEY

(A)

Musical staff for section A, featuring a melody in the bass clef with a 4/4 time signature and a key signature of one flat. The dynamics are marked *mf*.

(B)

Musical staff for section B, continuing the melody in the bass clef with a 4/4 time signature and a key signature of one flat.

FAST ROCK

Musical staff for section C, featuring a melody in the bass clef with a 4/4 time signature and a key signature of one flat. The dynamics are marked *f*.

(5) (8)

Musical staff for section D, featuring a melody in the bass clef with a 4/4 time signature and a key signature of one flat. The dynamics are marked *mf*.

Musical staff for section E, featuring a melody in the bass clef with a 4/4 time signature and a key signature of one flat.

To CODA 

SOLI

Musical staff for section F, featuring a melody in the bass clef with a 4/4 time signature and a key signature of one flat. The dynamics are marked *f*.

(7)

Musical staff for section G, featuring a melody in the bass clef with a 4/4 time signature and a key signature of one flat.

Copyright © 1959 by Fort Knox Music Inc. and Trio Music Company, Inc.
Copyright Renewed

This arrangement Copyright © 1989 by Fort Knox Music Inc. and Trio Music Company, Inc.
All rights administered by Hudson Bay Music, Inc.
International Copyright Secured All Rights Reserved
Used by Permission

21

25

(29)

33

37

(41) SOLD FOR ANY TEN. - 2ND TIME ONLY

Bb

C Bb F

1. PLAY-SOLO PICK-UPS 2. (D.S. AL CODA)

CODA

54

59

The Twist

TROMBONE 3

Words and Music by HANK BALLARD
Arranged by MICHAEL SWEENEY

UNISON PATTERNS

(A)



(B)



FAST ROCK

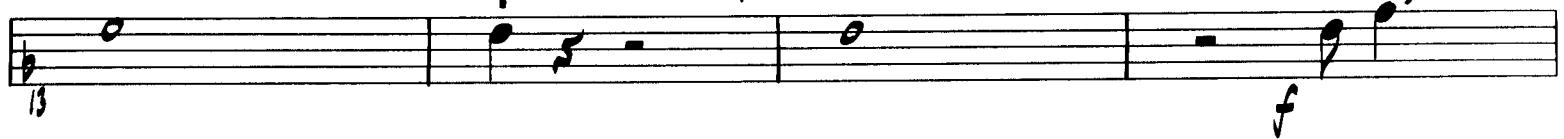


(5) (X)

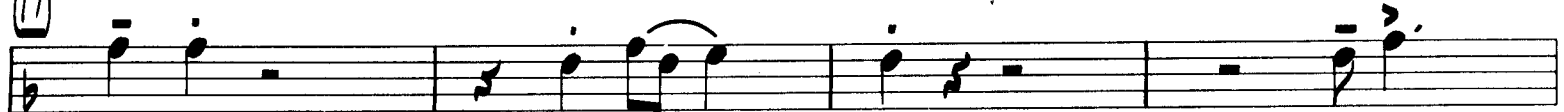


TO CODA ⊕

SOLI



(17)



Copyright © 1959 by Fort Knox Music Inc. and Trio Music Company, Inc.

Copyright Renewed

This arrangement Copyright © 1989 by Fort Knox Music Inc. and Trio Music Company, Inc.

All rights administered by Hudson Bay Music, Inc.

International Copyright Secured All Rights Reserved

Used by Permission

Trombone 3

21

25

29

33

37

41

SOLO FOR ANY TBW. -
2ND TIME ONLY

45

Bb F

49

C Bb F

1. PLAY-SOLO PICK-UPS 2. D.S. AL CODA

CODA

54

59

The Twist

TRUMPET 1

Words and Music by HANK BALLARD
Arranged by MICHAEL SWEENEY

UNISON PATTERNS

Handwritten circled letter **A** above the first staff.

Musical notation for Unison Patterns A and B. Pattern A is on a treble clef staff with a key signature of one sharp (F#) and a 4/4 time signature. It begins with a *mf* dynamic marking. Pattern B is on a bass clef staff with the same key signature and time signature.

Handwritten text **FAST ROCK** above the first staff.

Handwritten circled number **3** above the first staff.

Musical notation for the Fast Rock section. The first staff is on a treble clef with a 3/4 time signature. A thick black bar covers the first two measures. The second staff is on a bass clef. A *mf* dynamic marking is present.

Musical notation for the section following the Fast Rock section, consisting of two staves (treble and bass clef).

Handwritten text **TO CODA** above the first staff.

Musical notation for the section following the Fast Rock section, consisting of two staves (treble and bass clef).

Handwritten circled letter **D** above the first staff.

Musical notation for the section following the Fast Rock section, consisting of two staves (treble and bass clef). A *mf* dynamic marking is present.

31

35

39

33

37

41 SOLO FOR ANY TRP. - 2ND TIME ONLY

G.

C G

D C G

1. PLAY-SOLO PICK-UPS 2. TUTTI

D.S. AL CODA

CODA

54

59

The Twist

TRUMPET 2

UNISON PATTERNS

Words and Music by HANK BALLARD
Arranged by MICHAEL SWEENEY

A

mf

B

FAST ROCK

3

mf

5 **8**

TO CODA

13

17

mf

Copyright © 1959 by Fort Knox Music Inc. and Trio Music Company, Inc.
Copyright Renewed
This arrangement Copyright © 1989 by Fort Knox Music Inc. and Trio Music Company, Inc.
All rights administered by Hudson Bay Music, Inc.
International Copyright Secured All Rights Reserved
Used by Permission

21

25

29

33

37

41

SOLO FOR ANY TPT. - 2ND TIME ONLY

45

49

54

CODA

59

The Twist

TRUMPET 3

Words and Music by HANK BALLARD
Arranged by MICHAEL SWEENEY

UNISON PATTERNS

①

mf

②

FAST ROCK

3

mf

③ ④

TO CODA

mf

⑤

Copyright © 1959 by Fort Knox Music Inc. and Trio Music Company, Inc.
Copyright Renewed

This arrangement Copyright © 1989 by Fort Knox Music Inc. and Trio Music Company, Inc.

All rights administered by Hudson Bay Music, Inc.
International Copyright Secured All Rights Reserved

21

25

(29)

f

33

37

SOLO FOR ANY TPT. - 2ND TIME ONLY

(41)

G

C G

D C G

(1. PLAY-SOLO PICK UPS) (2. D.S. AL CODA)

49

CODA

f-TUTTI

54

f

The Twist

GUITAR

UNISON PATTERNS

Words and Music by HANK BALLARD
Arranged by MICHAEL SWEENEY

①

mf

FAST ROCK

⑤ ⑧

f

mf

C Bb F

SIM.

⑬ ⑯

f

SIM.

C Bb TO CODA F

Guitar

21 *Bb* *F*

25 *C* *Bb* *F*

29 *F*

33 *Bb* *F*

37 *C* *Bb* *F*

41 *F* *sim.*

45 *Bb* *F*

49 *C* *Bb* *F* 1. 2. (D.S. AL CODA)

54 CODA *F* *C* *Bb* *F*

59 *(F)* *C* *Bb* *F* *F9*

The Twist

PIANO

Words and Music by HANK BALLARD
Arranged by MICHAEL SWEENEY

UNISON PATTERNS

A

Musical notation for section A, featuring a piano accompaniment in 4/4 time. The piece is in B-flat major. The melody in the right hand consists of quarter notes: B-flat, A, G, F, E, D, C, B-flat. The bass line in the left hand consists of quarter notes: B-flat, A, G, F, E, D, C, B-flat. The dynamic marking is *mf*.

B

Musical notation for section B, featuring a piano accompaniment in 4/4 time. The piece is in B-flat major. The melody in the right hand consists of quarter notes: B-flat, A, G, F, E, D, C, B-flat. The bass line in the left hand consists of quarter notes: B-flat, A, G, F, E, D, C, B-flat.

FAST ROCK

C

Bb

F

Musical notation for section C, featuring a piano accompaniment in 4/4 time. The piece is in B-flat major. The melody in the right hand consists of eighth notes: B-flat, A, G, F, E, D, C, B-flat. The bass line in the left hand consists of quarter notes: B-flat, A, G, F, E, D, C, B-flat. The dynamic marking is *f*.

D

E

F

Musical notation for section D, featuring a piano accompaniment in 4/4 time. The piece is in B-flat major. The melody in the right hand consists of quarter notes: B-flat, A, G, F, E, D, C, B-flat. The bass line in the left hand consists of quarter notes: B-flat, A, G, F, E, D, C, B-flat. The dynamic marking is *mf*.

Copyright © 1959 by Fort Knox Music Inc. and Trio Music Company, Inc.

Copyright Renewed

This arrangement Copyright © 1989 by Fort Knox Music Inc. and Trio Music Company, Inc.

All rights administered by Hudson Bay Music, Inc.

International Copyright Secured All Rights Reserved

Used by Permission

Handwritten musical score system 1. Treble clef, bass clef. Chords: Bb , F . Measure numbers: 7, 8, 9, 10.

Handwritten musical score system 2. Treble clef, bass clef. Chords: C , Bb , F . Includes the handwritten text "TO LODA" with a circled ϕ symbol. Measure numbers: 11, 12, 13, 14.

Handwritten musical score system 3. Treble clef, bass clef. Chord: F . Measure numbers: 15, 16, 17, 18.

Handwritten musical score system 4. Treble clef, bass clef. Chords: Bb , F . Measure numbers: 19, 20, 21, 22.

Handwritten musical score system 5. Treble clef, bass clef. Chords: C , Bb , F . Measure numbers: 23, 24, 25, 26.

Handwritten musical score system 6. Treble clef, bass clef. Chord: F . Measure numbers: 27, 28, 29, 30.

Musical notation system 1. Treble clef: Chords Bb and F. Bass clef: Melodic line. Measure numbers 33 and 34 are indicated.

Musical notation system 2. Treble clef: Chords C, Bb, F, and F. Bass clef: Melodic line. Measure numbers 37 and 38 are indicated. A double bar line with a circled 41 is present.

Musical notation system 3. Treble clef: Chords Bb and F. Bass clef: Melodic line. Measure numbers 43 and 44 are indicated.

Musical notation system 4. Treble clef: Chords C, Bb, F, and F. Bass clef: Melodic line. Measure numbers 47 and 48 are indicated. First and second endings are marked with (1.) and (2.).

D.S. AL CODA

Musical notation system 5. Treble clef: Chords F, C, Bb, and F. Bass clef: Melodic line. Measure numbers 51 and 52 are indicated. A CODA symbol is present at the start.

Musical notation system 6. Treble clef: Chords (F), C, Bb, F, F#, and C. Bass clef: Melodic line. Measure numbers 54 and 55 are indicated.

The Twist

BASS

Words and Music by HANK BALLARD
Arranged by MICHAEL SWEENEY

UNISON PATTERNS

(A)

Musical staff for unison pattern A. It features a treble clef, a key signature of one flat (Bb), and a 4/4 time signature. The melody consists of quarter notes and eighth notes. A dynamic marking of *mf* is present below the first measure.

(B)

Musical staff for unison pattern B. It features a bass clef, a key signature of one flat (Bb), and a 4/4 time signature. The melody consists of quarter notes and eighth notes.

FAST ROCK C

Musical staff for the fast rock section, first line. It features a treble clef, a key signature of one flat (Bb), and a 4/4 time signature. The melody consists of eighth notes. Chord markings C, Bb, and F are present above the staff.

Musical staff for the fast rock section, second line. It features a bass clef, a key signature of one flat (Bb), and a 4/4 time signature. The melody consists of eighth notes. Chord markings F and Bb are present above the staff. A circled '5' and a circled '8' are written to the left of the staff.

Musical staff for the fast rock section, third line. It features a bass clef, a key signature of one flat (Bb), and a 4/4 time signature. The melody consists of eighth notes. Chord markings Bb and F are present above the staff.

Musical staff for the fast rock section, fourth line. It features a bass clef, a key signature of one flat (Bb), and a 4/4 time signature. The melody consists of eighth notes. Chord markings C, Bb, and F are present above the staff. The text 'TO CODA' is written above the staff.

Musical staff for the fast rock section, fifth line. It features a bass clef, a key signature of one flat (Bb), and a 4/4 time signature. The melody consists of eighth notes. Chord markings F and Bb are present above the staff.

Copyright © 1959 by Fort Knox Music Inc. and Trio Music Company, Inc.

Copyright Renewed

This arrangement Copyright © 1989 by Fort Knox Music Inc. and Trio Music Company, Inc.

All rights administered by Hudson Bay Music, Inc.

International Copyright Secured All Rights Reserved

Used by Permission

21 Bb F

25 C Bb F

29 F

33 Bb F

37 C Bb F

41 F

45 Bb F

49 C Bb F 1. 2. **D.S. AL CODA**

CODA F C Bb F

57 (F) C Bb F F^9

The Twist

DRUMS

UNISON PATTERNS

Words and Music by HANK BALLARE
Arranged by MICHAEL SWEENEY

(A) HI-HAT

mf

Musical notation for drum pattern A, featuring a hi-hat pattern (marked 'HI-HAT') and a bass line. The notation includes a treble clef, a 4/4 time signature, and a dynamic marking of 'mf'. The pattern consists of a series of eighth notes on the hi-hat and a corresponding bass line.

FAST ROCK
HI-HAT

f

Musical notation for drum pattern B, featuring a fast rock hi-hat pattern (marked 'FAST ROCK HI-HAT') and a bass line. The notation includes a treble clef, a 4/4 time signature, and a dynamic marking of 'f'. The pattern consists of a series of eighth notes on the hi-hat and a corresponding bass line.

Musical notation for drum pattern C, featuring a fast rock hi-hat pattern and a bass line. The notation includes a treble clef, a 4/4 time signature, and a dynamic marking of 'mf'. The pattern consists of a series of eighth notes on the hi-hat and a corresponding bass line.

TO CODA

FILL

Musical notation for drum pattern D, featuring a fast rock hi-hat pattern (marked 'TO CODA') and a bass line. The notation includes a treble clef, a 4/4 time signature, and a dynamic marking of 'mf'. The pattern consists of a series of eighth notes on the hi-hat and a corresponding bass line, ending with a 'FILL'.

Copyright © 1959 by Fort Knox Music Inc. and Trio Music Company, Inc.
Copyright Renewed
This arrangement Copyright © 1989 by Fort Knox Music Inc. and Trio Music Company, Inc.
All rights administered by Hudson Bay Music, Inc.
International Copyright Secured All Rights Reserved
Used by Permission

8
31

35

29

f

33

8

37

41

mf

45

8

49

1. FILL

2. D.S. AL CODA

54

CODA

59

f

FILL